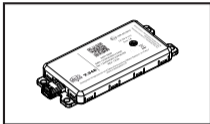


OBSAH BALENIA



TELEMATICKÁ JEDNOTKA

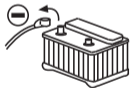


KABELÁŽ



SÁČOK S PRÍSLUŠENSTVOM

ODPOJTE AKUMULÁTOR



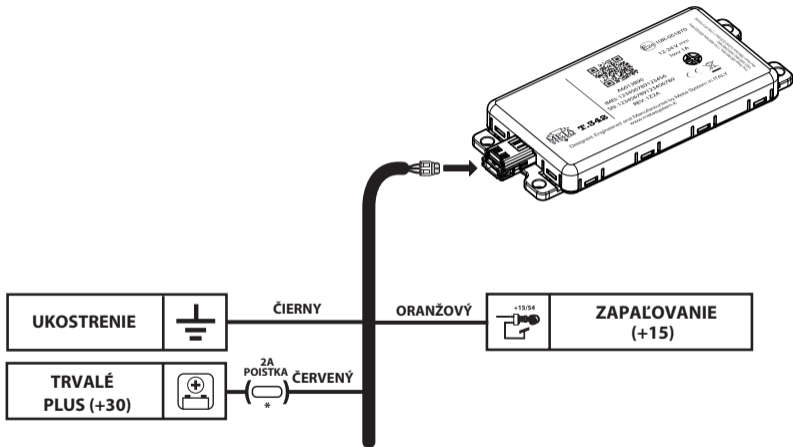
TECHNICKÉ ÚDAJE

Rozmery:	55x124x13 mm
Napájacie napätie:	12/24V
Frekvenčné pásma:	..880-960 MHz;1559.00MHz-1610.00MHz;1710-1880MHz;2402-2480MHz
Maximálny výkon:GSM Class 4 (2W); DCS Class 1 (1W); BT (<10mW)
Pracovná teplota:from -30°C to +80°C
Aplicčná trieda: vnútro vozidla

GENERAL NOTES

- T.42 je satelitné sledovacie zariadenie zložené z GSM a GPS modulu so vstavanou anténou a modulu gyroskopu a snímania preťaženia v 6 osiach.
- Jednotku umiestnite do priestoru bez káblov a kovových častí.

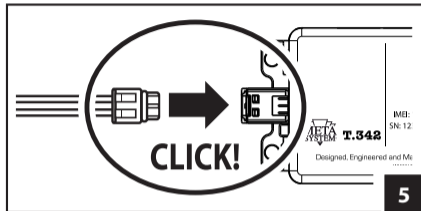
SCHÉMA PRIPOJENIA



* odporúča sa, ak miesto pripojenia nie je istené pôvodnou poistkou.

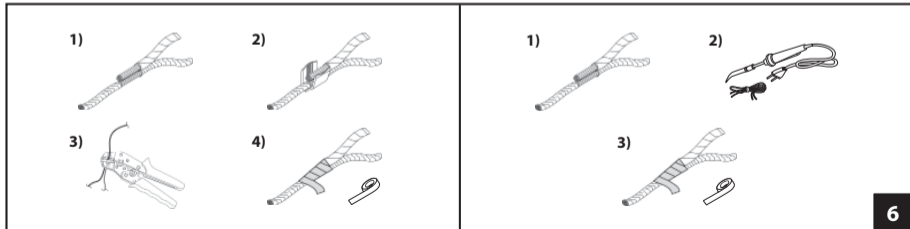
ELECTRICAL CONNECTIONS

- T.42 requires the electrical connection of the main power supply and of the key-operated positive pole.
- Take the signal of the battery's positive pole from a fuse in the fuse box.
- Check the fixed positive (+30) and the positive pole under the panel are PERMANENT signals and NOT timed.
- Take the ground connection from the appropriate derivation nodes.



Proceed with a traditional connection (stripping and crimping, in that case, solder the wires and provide to isolate with tape).

NOTE: do not use quick connection systems (e.g. cable taps)



DIAGNOSTIC AND DEVICE STATUS

The T.42 has a double LED that provides Diagnostic information (GSM and GPS) and indicates the Status of the device. The 2 LEDs can FLASH SLOWLY (400 ms) or FLASH RAPIDLY (100 ms) independently of one another and turn off at the same time.

Example: 2 slow flashes of the GREEN LED immediately after 2 rapid flashes of the RED LED: the product is in Pre-activation, Wake-up mode, but has not yet performed Fix GPS.

GREEN LED - Device Status

Status	Signal	
Pre-activation/Disabled	Awake	2 SLOW Flashes (every 4 sec.)
	Sleep mode	1 SLOW Flash (every 4 sec.)
Active	Awake	2 FAST Flashes (every 4 sec.)
	Sleep mode	1 FAST Flash (every 4 sec.)

RED LED - Diagnostic

Status	Signal
GSM not registered	1 FAST Flash (every 4 sec.)
No GPS fix	2 FAST Flashes (every 4 sec.)
GSM not registered and no GPS fix	3 FAST Flashes (every 4 sec.)

ACTIVATION AND DIAGNOSTIC

The device is activated automatically or manually depending on what is agreed in the contract. Follow what is reported in the specific information. The procedure requires the vehicle to be outside in the open so that it has a good GSM signal and can receive satellite signals. Check that the terminal has been associated correctly to the contact.

STANDARDS APPLICABLE TO THE VEHICLE

The instructions in this manual do not refer to specific vehicle models but apply to all vehicles in general. Any information provided by Meta System regarding a type (model) of vehicle is to be considered purely indicative. Installation, positioning, product securing and electrical connections, and possibly the removal, must be carried out in a workmanlike manner on each motor vehicle. The installer is obliged to and bears responsibility for carefully verifying the individual vehicle model on which operations are carried out. Failure to comply with that stipulated above can render the warranty of the device null and void.

SIMPLIFIED EU DECLARATION OF CONFORMITY

Hereby, Meta System S.p.A. declares that Telematic Tracking device Model T.342 is in compliance with Radio Equipment Directive 2014/53/EU.

Frequency Bands in which the radio equipment operates:

880.00 MHz – 960.00 MHz
1559.00 MHz – 1610.00 MHz
1710.00 MHz – 1880.00 MHz
2402.00 MHz – 2480.00 MHz

Max Power:

GSM Class 4 (2W), DCS Class 1 (1W), BT (<10mW)

The full text of the EU Declaration of Conformity is available at the following internet address: <https://docs.metasystem.it/>

Certificate Holder's Address:

Meta System S.p.A. - Via Galimberti 5, 42124 Reggio Emilia - Italy